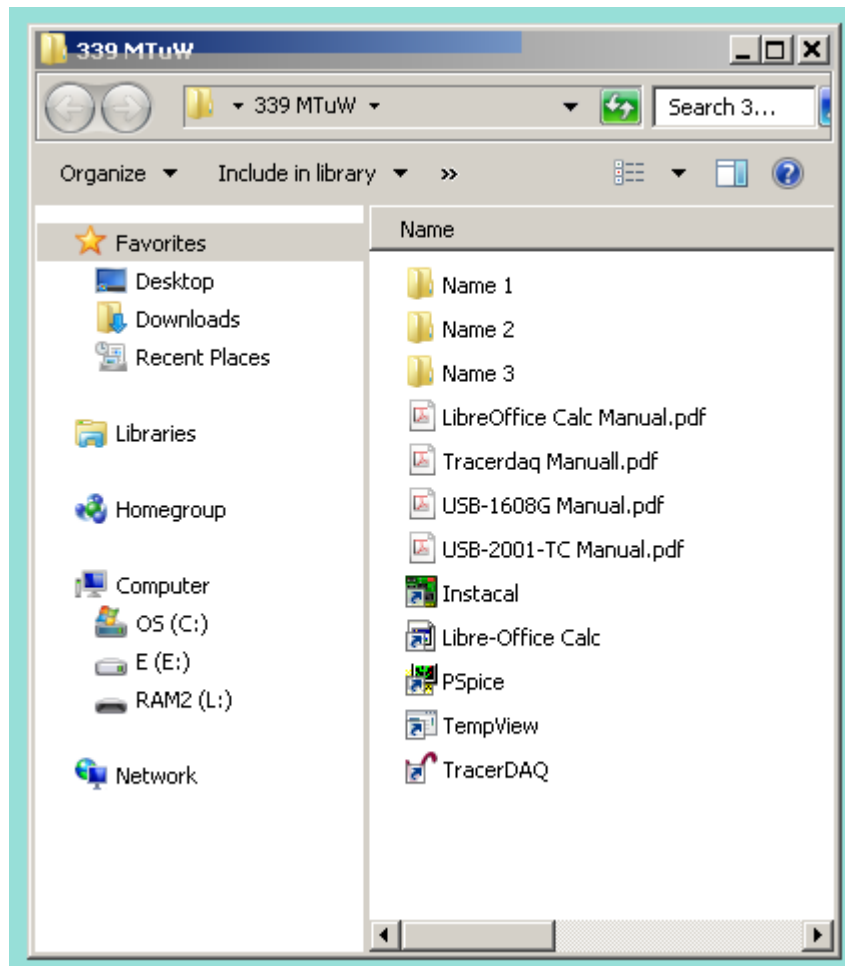
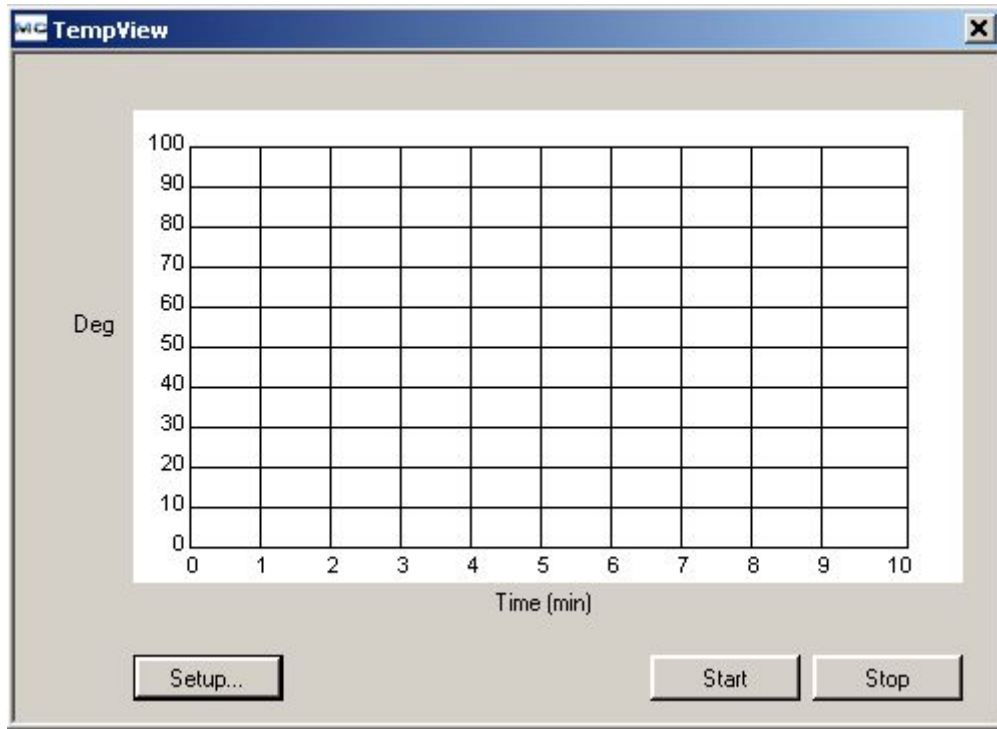


ELE339, Electronics I Laboratory
Setting up the Thermocouple software (TempView)

M Tu Wd Folders



Open TempView



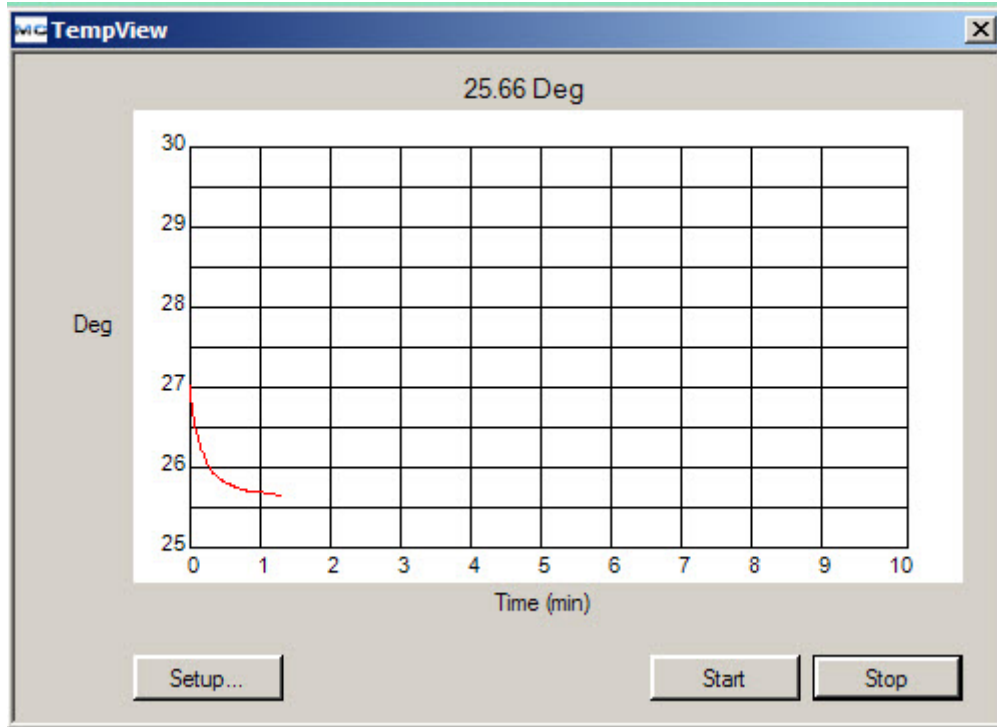
Setup the variables

The image shows a "SetupDlg" dialog box with the following configuration options:

- Device: USB-2001-TC::01655856
- Channel: 0
- Channel Mode: DIFF
- Thermocouple Type: J
- Temperature Units: Deg C
- Sample Period (sec): 1
- Log Data:
- Description: C:\Users\Mardix\Desktop\339 MT uW\Na

There is an "OK" button at the bottom right of the dialog box.

click 'OK' and 'Start'

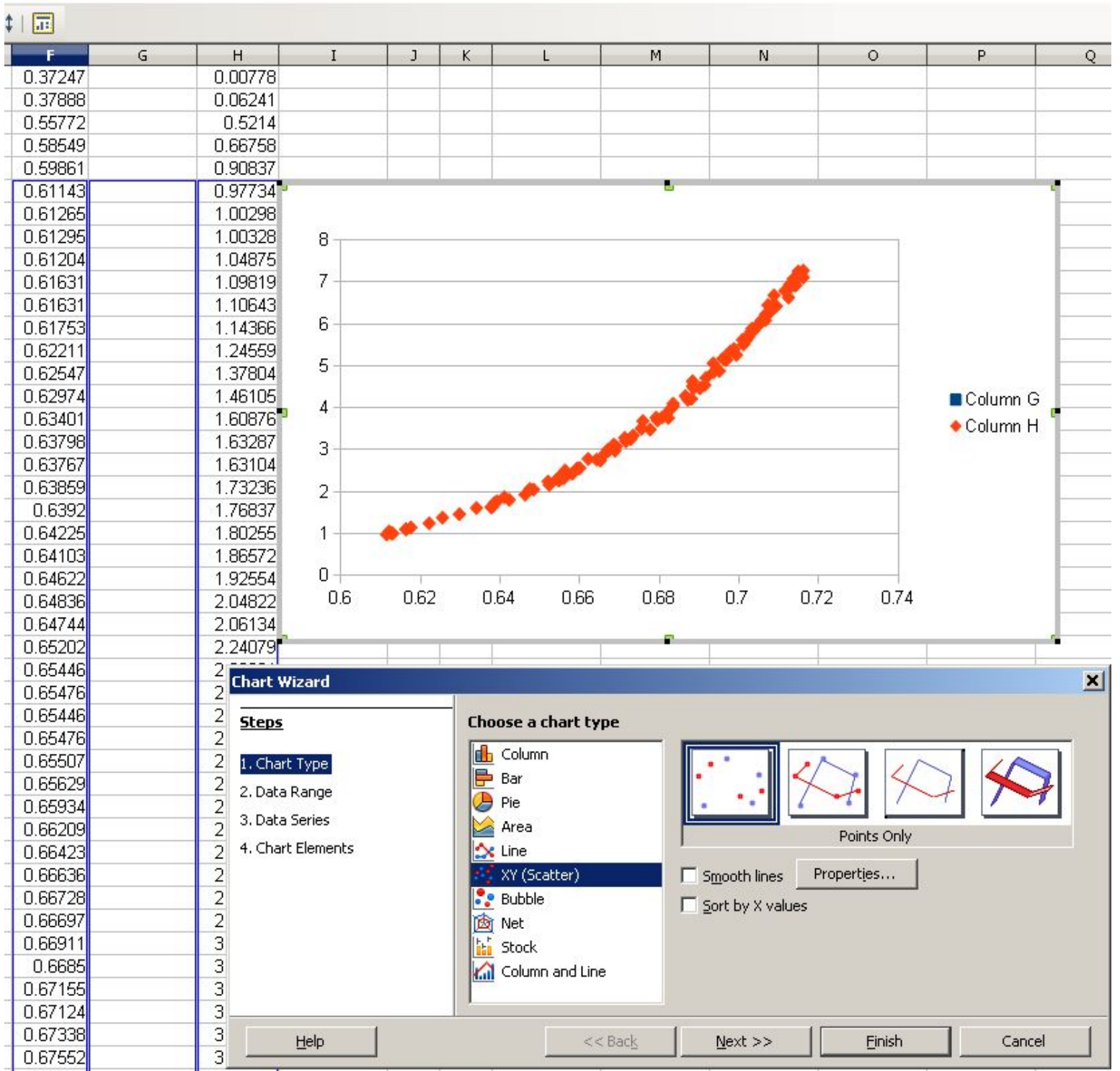


Click 'Stop' and open your saved temperature data file

```
Temp 9_1_2013.txt - Notepad
File Edit Format View Help
Start Time: 9/1/2013 3:36:09 PM
File: C:\Documents and Settings\Administrator\Desktop\Temp 9_15_2013.txt
Device: USB-2001-TC
Serial Number: 01655856
Thermocouple Type: J
Units: Deg C
Sample Period: 1 sec
Description:

Time          Temperature
1             26.8866377507996
2             26.7870883843766
3             26.6956030636228
4             26.6175657671619
5             26.5314495530939
6             26.4668581939836
7             26.4130293106927
8             26.3591979255092
9             26.3134392801092
10            26.2542195238662
11            26.2138406793301
12            26.1761524858474
13            26.1411552062106
14            26.1061568670065
15            26.0630805329528
16            26.0361570085991
17            26.0119253001396
18            25.9850005833366
19            25.9661529080308
20            25.9446123309244
21            25.9311492661246
22            25.9176860442961
23            25.901529970798
```

Plot a required graph of a measured variable as a function of temperatur



Fit a curve

